

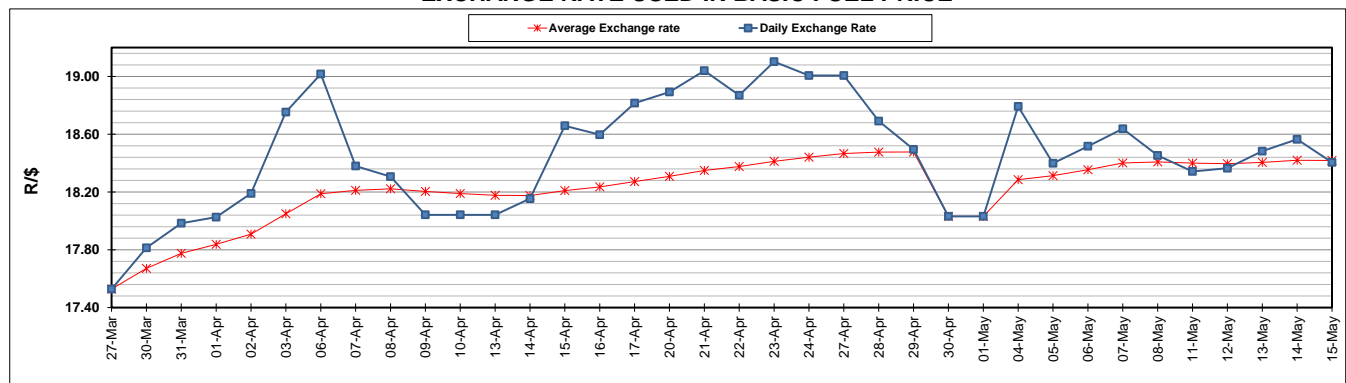
	PETROL 95 ULP	PETROL 93 ULP & LRP	DIESEL 0.05%	DIESEL 0.005%	ILL. PAR.
GAUTENG PUMP PRICE (SA c/l) AS FROM 06/05/2020	1,222.000	1,202.000	-	-	-
WHOLESALE PRICE (SA c/l) AS FROM 06/05/2020	-	-	1,108.560	1,117.960	449.828
SINGLE NATIONAL MAXIMUM RETAIL PRICE	-	-	-	-	543.000
BASIC FUEL PRICE - 15/05/2020 (SA c/l)	445.457	426.395	439.356	447.542	364.698
PRESS RELEASE CONTRIBUTION TO BFP 06/05/2020 - 15/05/2020 (SA c/l)	274.770	264.770	357.630	367.030	245.128
UNIT OVER/(UNDER) RECOVERY - 15/05/2020 (SA c/l)	(170.687)	(161.625)	(81.726)	(80.512)	(119.570)
AVERAGE BASIC FUEL PRICE 30/04/2020 - 15/05/2020	392.032	374.606	367.050	376.358	260.772
AVERAGE UNIT OVER/(UNDER) RECOVERY 30/04/2020 - 15/05/2020	(59.262)	(51.836)	44.246	42.672	58.689

### ANALYSIS MOVEMENT OF AVERAGE OVER/(UNDER) RECOVERY

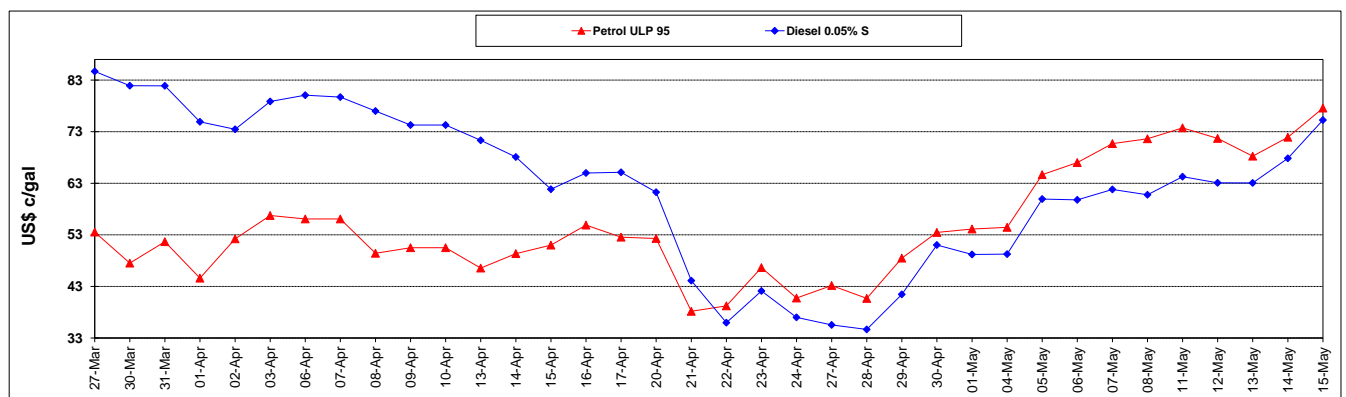
	PETROL 95	PETROL 93	DIESEL 0.05%	DIESEL 0.005%	ILL. PAR.
- MOVEMENT IN INTERNATIONAL PRODUCT PRICES	(60.514)	(53.032)	43.075	41.470	57.856
- MOVEMENT IN EXCHANGE RATE	1.252	1.196	1.172	1.202	0.833
AVERAGE UNIT OVER/(UNDER) RECOVERY 30/04/2020 - 15/05/2020	(59.262)	(51.836)	44.246	42.672	58.689

**R/\$ EXCHANGE RATE - (R/\$18.4050 - 15/05/2020)**

### EXCHANGE RATE USED IN BASIC FUEL PRICE



### INTERNATIONAL PRODUCT PRICES OF BASKET USED IN BASIC FUEL PRICE



### BASIC FUEL PRICE IN SA CENTS PER LITRE

